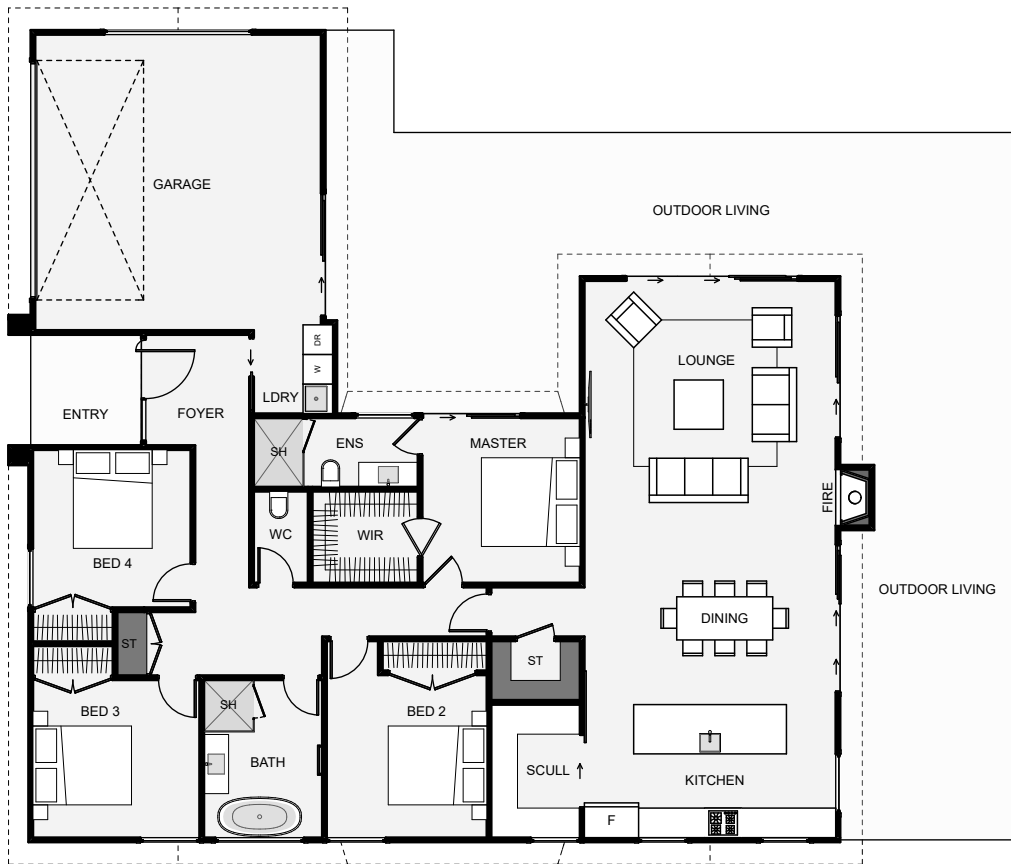




Designed to cover four bedrooms within a small footprint, this home comes with a lot of value. The garage smartly offsets the home to create a private outdoor space. The kitchen is a good size and includes a scullery. The main living wing has the option for a flat, scissor or sloped ceiling, which can make a big difference in interior feel. With this design, you can get a lot of family home within a smaller budget.



Floor Area: 201m²

2
 4
 2
 1
 17.6m
 16.5m

Contact us:

Phone: 0800 279 274

Email: info@supremebuild.co.nz

www.supremebuild.co.nz

supremebuild

Build Better. Live Better.