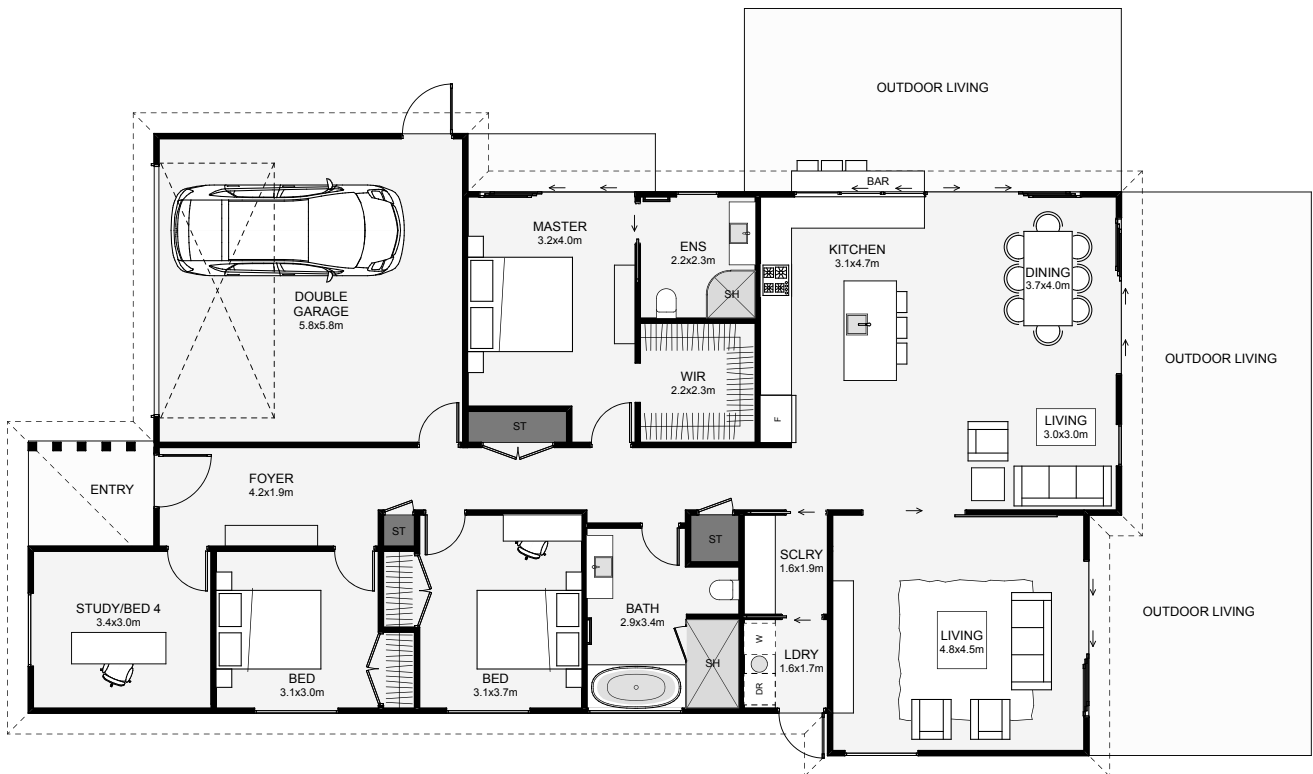




If your section has a southern entry point, read on! The main living, dining and kitchen are positioned for a great northern outlook with the optional outdoor kitchen bar for evenings with family and friends. Some other great features include the dual living, the master's large walk-in wardrobe, one extra wide bedroom which could easily fit a desk and an optional study close to the front door if you plan on working from home!



Floor Area: 199m<sup>2</sup>



Contact us:

Phone: 0800 279 274

Email: [info@supremebuild.co.nz](mailto:info@supremebuild.co.nz)

[www.supremebuild.co.nz](http://www.supremebuild.co.nz)

**supremebuild**

Build Better. Live Better.