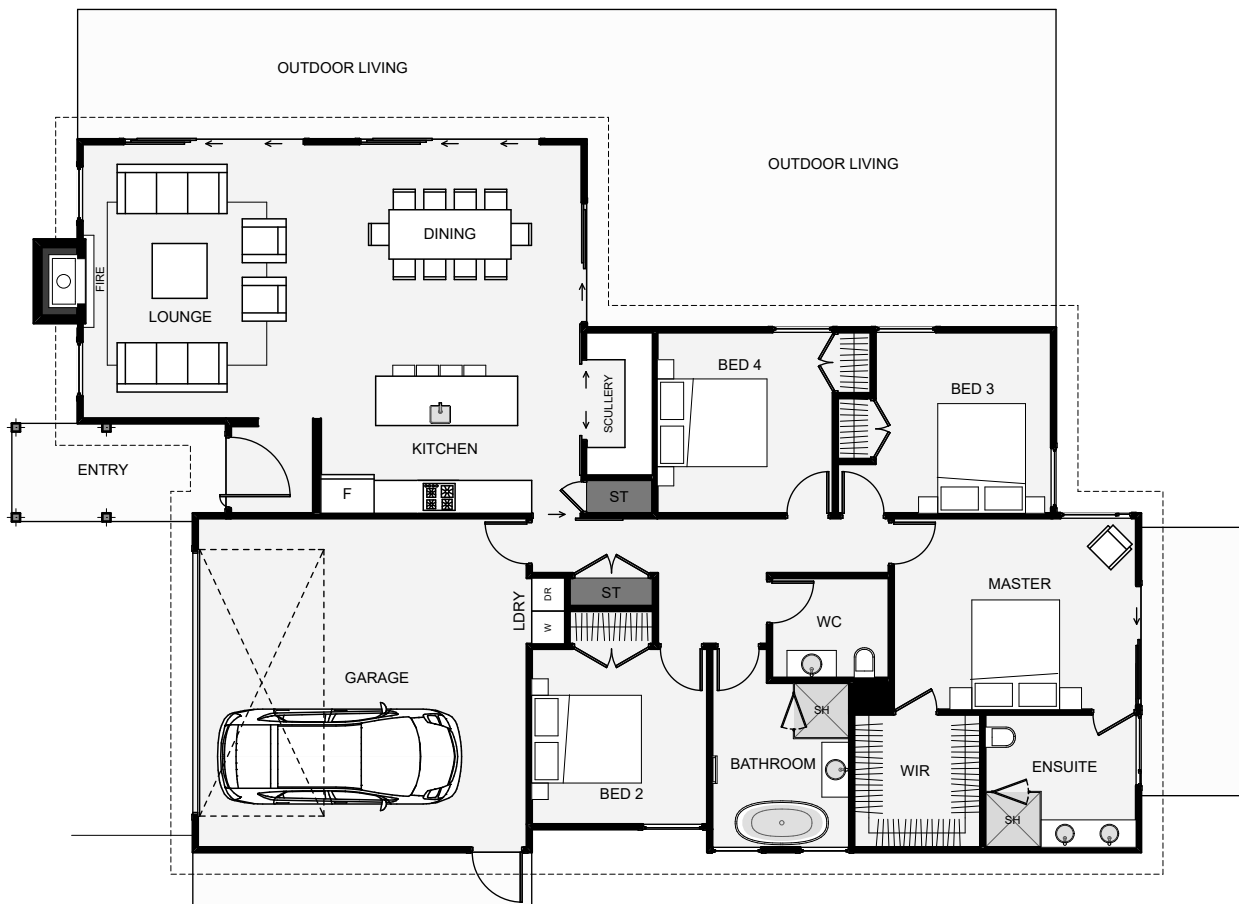




This home oozes with timeless street appeal and character, the kind of home that doesn't date. The home is also surprisingly small in size with no downsides. The home includes a good size scullery, four bedrooms, a decent master with a large walk-in wardrobe and ensuite with a dual vanity, plus some fine exterior styling that will last a lifetime!



Floor Area: 195m<sup>2</sup>

2  
 4  
 2  
 1  
 20.1m  
 13.0m

Contact us:

Phone: 0800 279 274

Email: [info@supremebuild.co.nz](mailto:info@supremebuild.co.nz)

[www.supremebuild.co.nz](http://www.supremebuild.co.nz)

**supremebuild**

Build Better. Live Better.